

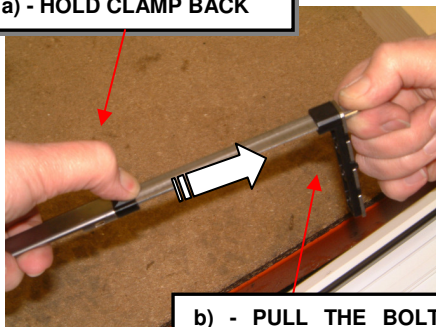
Stallion 2 Shoot Bolt

Fitting Instructions

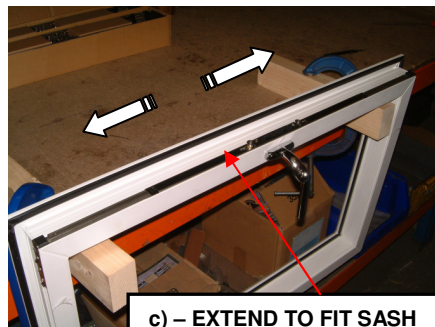


1 – ADJUST THE TELESCOPIC ENDS

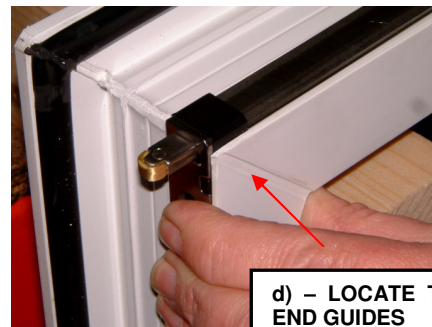
a) - HOLD CLAMP BACK



b) - PULL THE BOLT EXTENSION OUTWARD



c) - EXTEND TO FIT SASH



d) - LOCATE THE END GUIDES

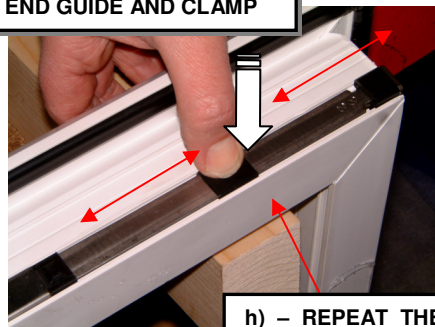
2 – FIT SHOOT BOLT INTO POSITION

e) - CLIP THE SHOOT BOLT INTO THE EURO GROOVE



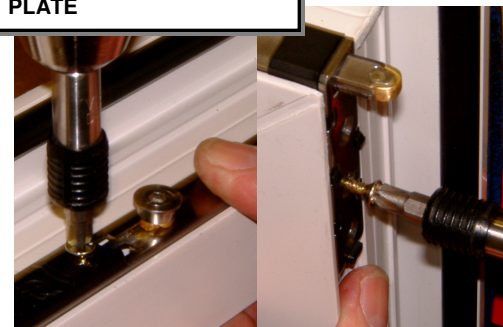
f) - PRESS DOWN FIRMLY ON 'C' CHANNEL ADJACENT TO CLAMP UNTIL IT SNAPS IN

g) - IF EXTRA GUIDE IS PRESENT, POSITION IT HALF WAY BETWEEN END GUIDE AND CLAMP



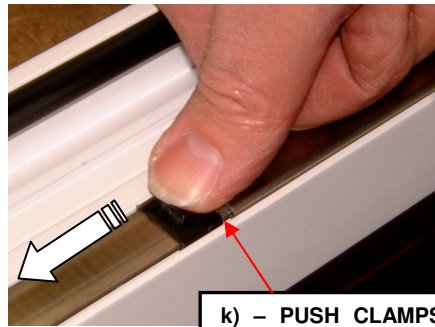
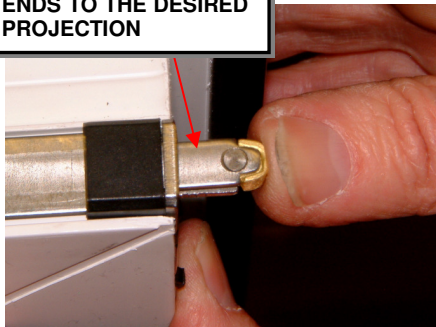
h) - REPEAT THE PROCESS AS IN f)

i) - INSERT SCREWS INTO END GUIDE AND COVER PLATE



3 – SETTING THE BOLT END

j) - SET THE BOLT ENDS TO THE DESIRED PROJECTION



k) - PUSH CLAMPS FIRMLY OUTWARDS

l) - INSERT HANDLE AND ROTATE FULLY TO ACTIVATE SELF LOCKING MECHANISM

