



Patio Door Lock – LPD900
Installation Guide



1x Centre Lock



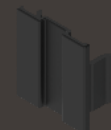
1x Keep



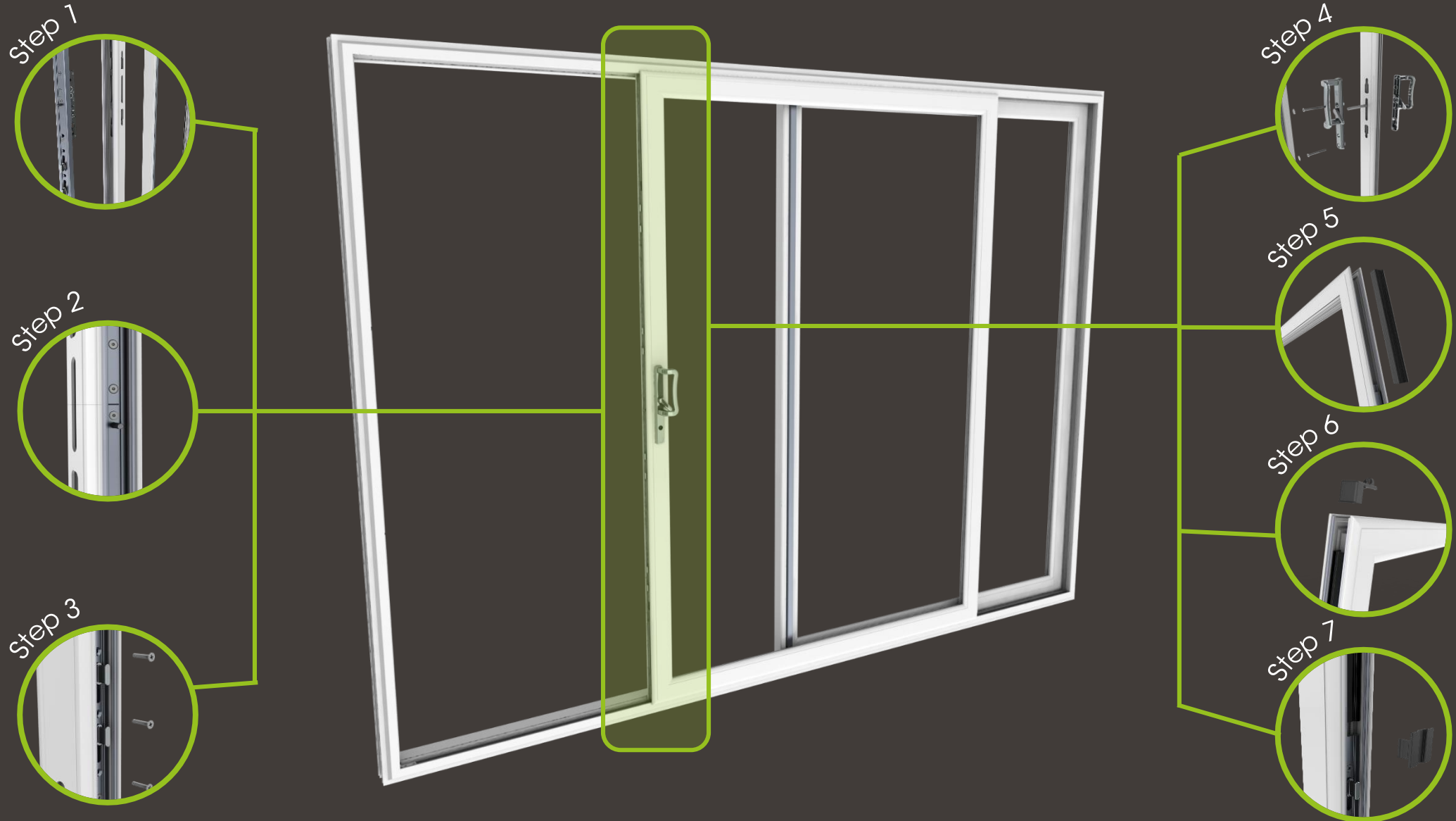
2x Corner Cover

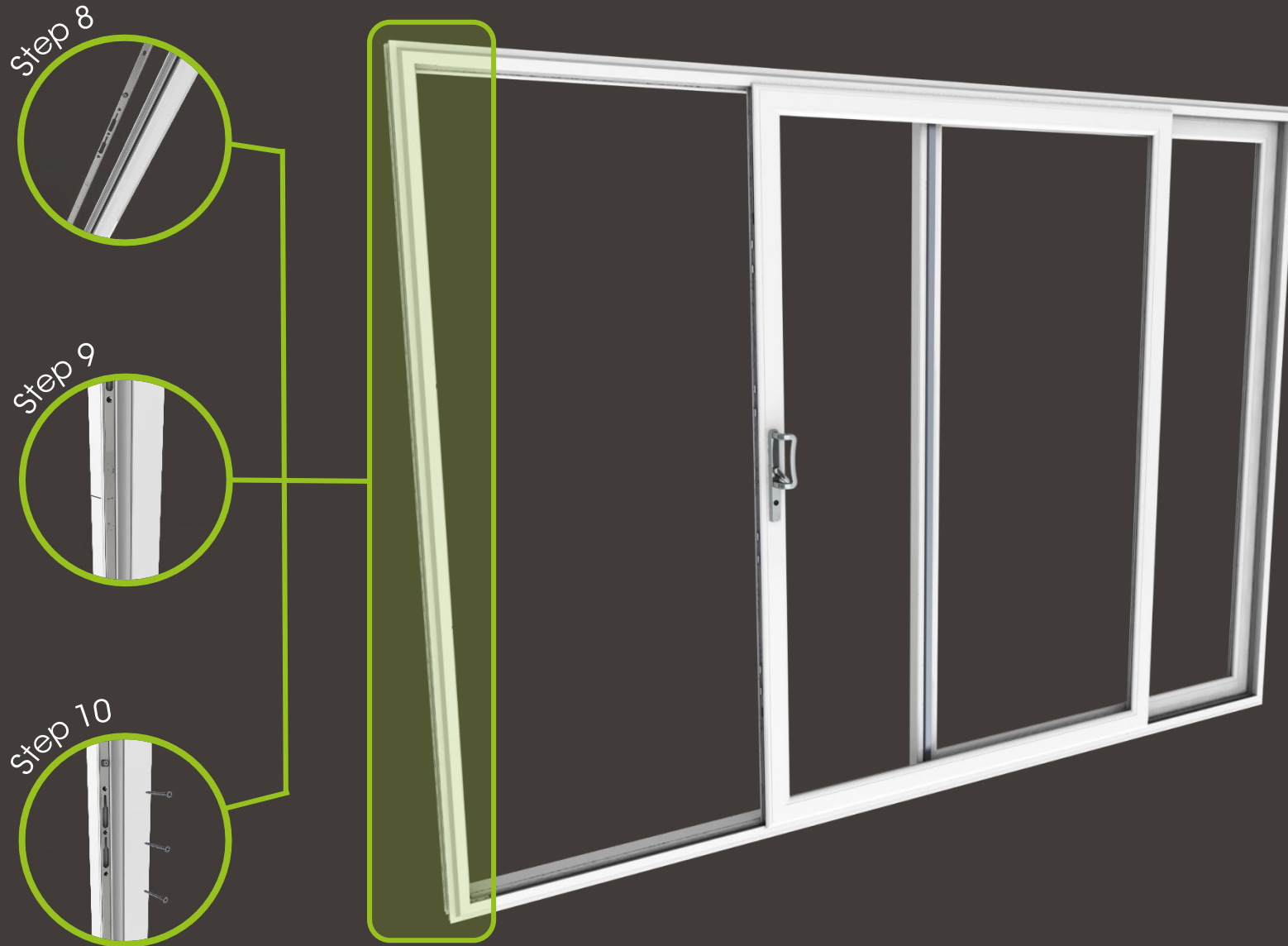


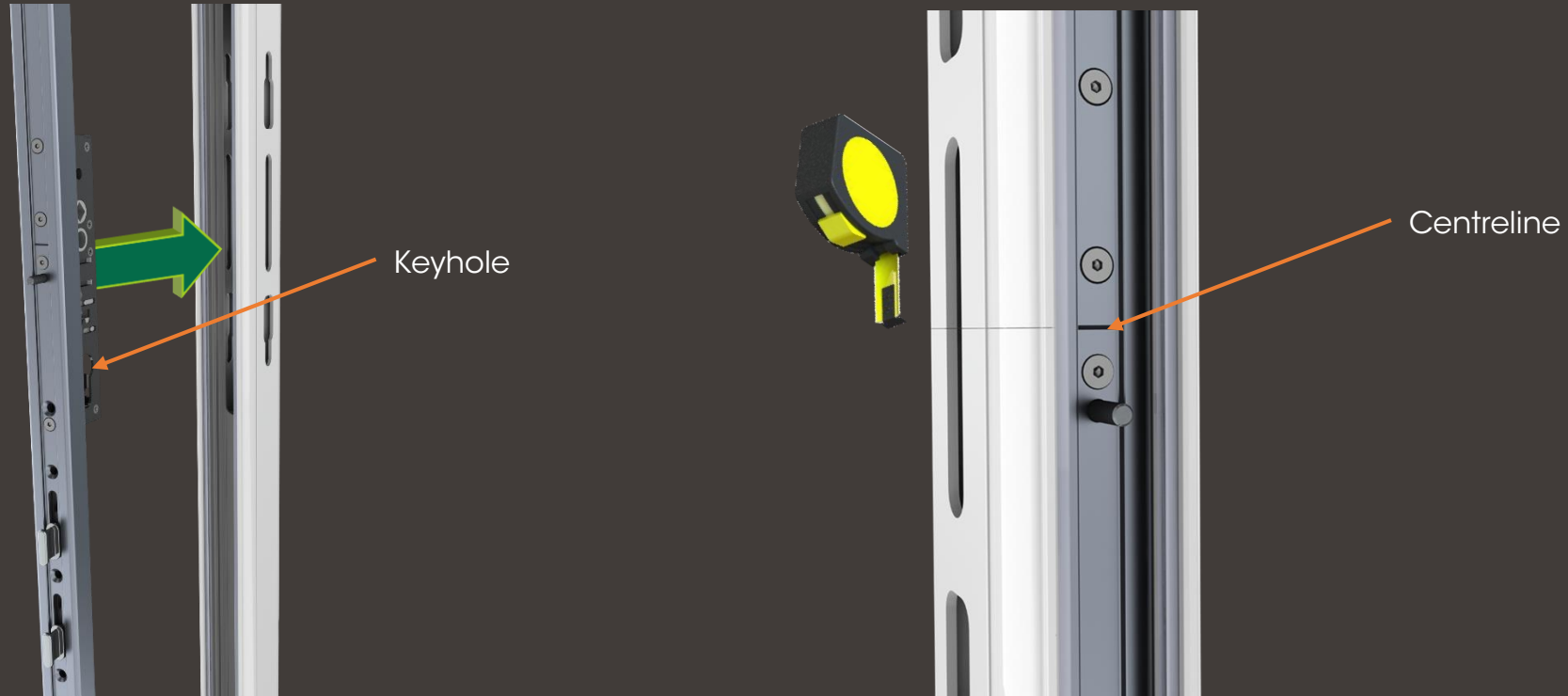
2x Channel Cover



2x Facia Clip Cover

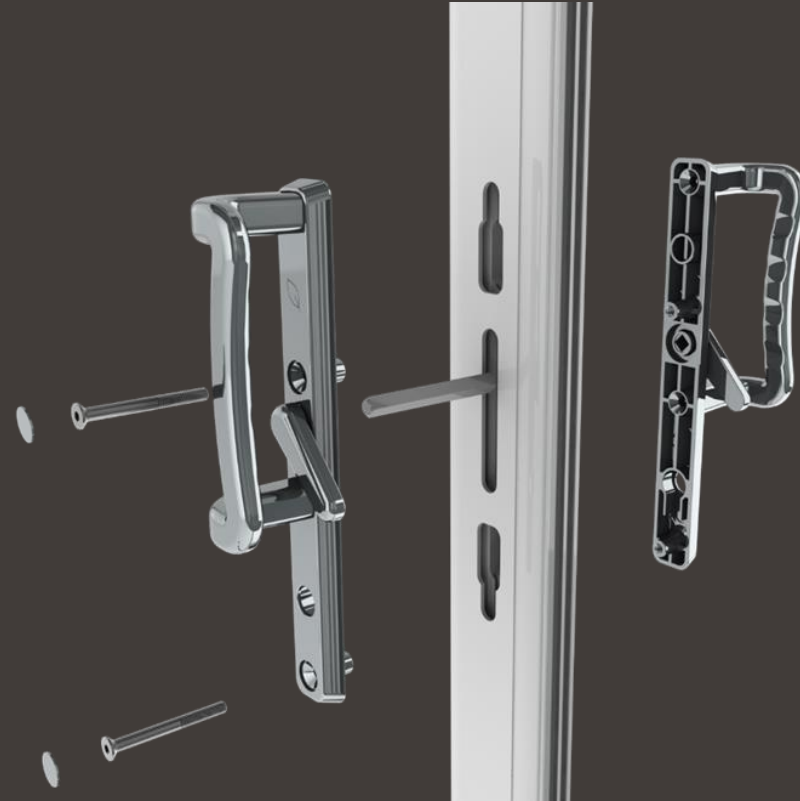






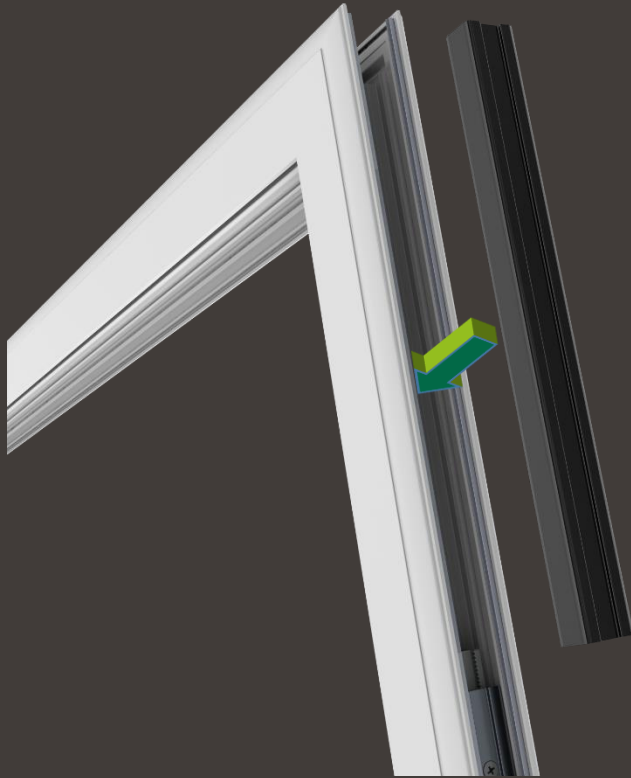
Step 1
Insert **Centre Lock** into sash profile assuring that the keyhole is at the bottom

Step 2
Measure and mark centre of sash profile and align centreline of the **Centre Lock**



Step 3
Screw **Centre Lock** into
place with appropriate
fixings

Step 4
Fit Liniar Handle Set (LPD045)



Step 5

Cut **Channel Covers** to size and insert them into sash profile above and below the **Centre Lock**

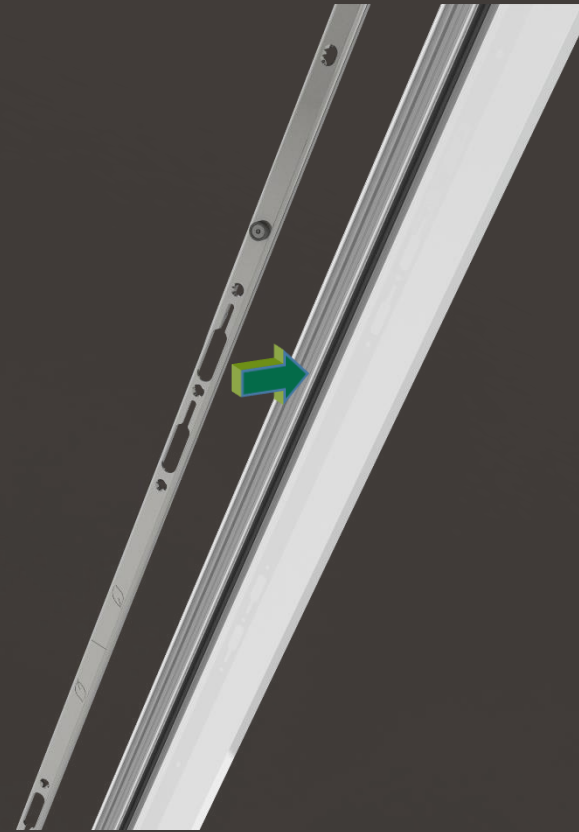


Step 6

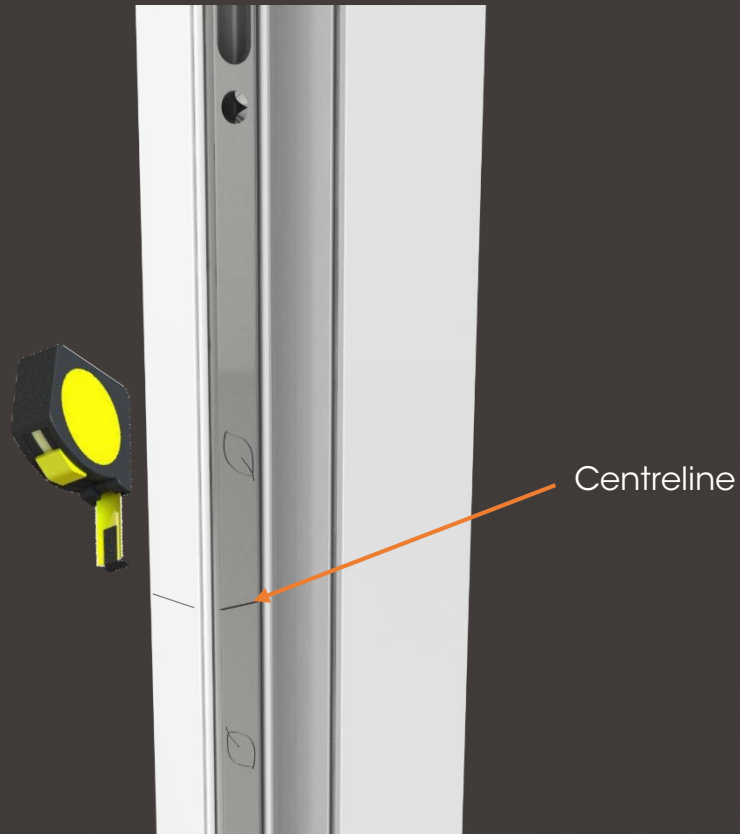
Install **Corner Covers** top and bottom and screw into place



Step 7
Insert **Facia Clip Covers**
between the **Centre Lock**
and the **Channel Covers**,
top and bottom



Step 8
Insert **Keep** into the
outer frame profile
ensuring the **Liniar logo**
is pointing outwards



Step 9
Measure and mark
centre point of outer
frame profile, and align
to the centreline of **Keep**



Step 10
Screw **Keep** into
position using
appropriate fixings